

Private Sector Technology Group (PSTG)

Reuse Committee Report

Reuse Committee Summary



The Reuse Committee was formed to research and analyze concepts of reuse to:

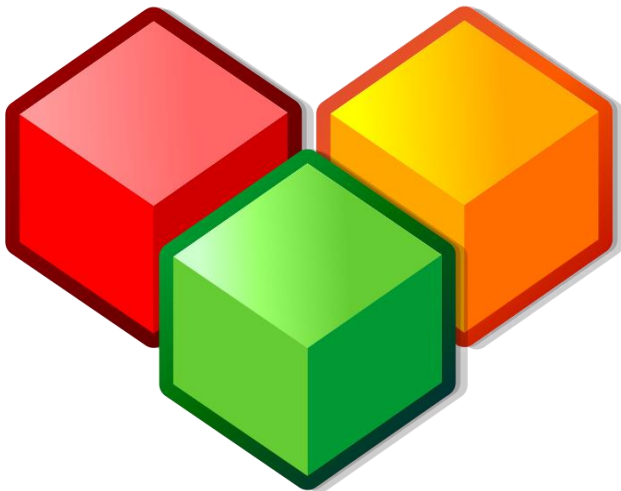
- Identify opportunities to apply reuse concepts to MMIS
- Identify business process model reuse
- Identify standards for reuse
- Identify procurement opportunities for reusable modules



Module Reuse Concepts

This presentation will focus on three reuse concepts:

- Reuse will require minimized **Variation** between states and modules
- Reuse will require focused **Planning, Module Design, and Technology adoption** to manage change
- Reuse will require **Shared Effort** across the industry, states and CMS



Variations in Current State Modules (*as of July 2018)

	Pennsylvania	Kansas	South Carolina	Virginia	Wyoming
Functional Modules	16	8	7	4	7
Business Process Reengineering	✓				✓
Program Management Office	✓		✓		
System Integrator	✓		✓	✓	✓

Other module variations that differ across states include:

- Mail Service
- Electronic Data Interchange (EDI)
- Member Enrollment
- Provider Enrollment
- Drug Rebate
- Prior Authorization
- Program Integrity/Fraud, Waste and Abuse
- Electronic Visit Verification
- Administrative Services Organization (ASO)
- Third Party Liability (TPL)
- Pharmacy Benefits Management (PBM)
- Fee-for-Service (FFS)
- Managed Care Organization (MCO)
- Enterprise Data Warehouse (EDW)
- Home and Community Based Services (HCBS)

Business Process Model Reuse – Market Perspective

Eligibility and Enrollment Management

Determine
Member Eligibility

Determine
Provider Eligibility

Enroll Member

Enroll Provider

Inquire Member
Eligibility

Inquire Provider
Information

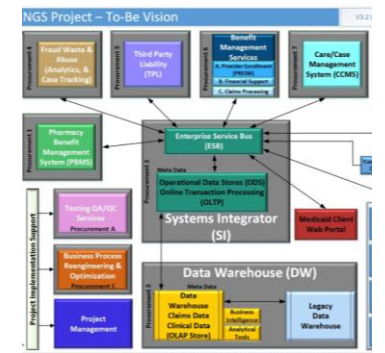
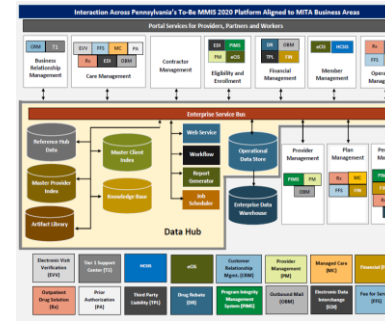
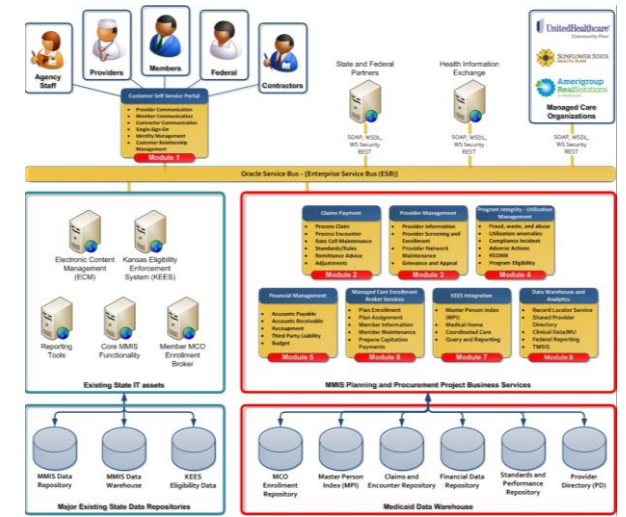
Disenroll Member

Disenroll Provider

- Most states have adapted the MITA 3.0 business process model to reflect state policy for Medicaid operations
- Business process model standards must be adopted across multiple states in order to achieve business service reuse
- As states adopt a standard business model, vendors would have incentive to build solutions to meet the standard model
- Organizational factors such as change management and State planning often challenge standard business process adoption
- For example, the Provider Screening and Provider Enrollment process have many standard process steps, but process variations exist within each state

State Planning

- States are making gains in developing conceptual models for module interactions
- Opportunities remain to develop more detailed planning for interfaces, APIs and business service mapping
- Leverage MITA, Lean, ITIL, TOGAF and other frameworks to organize and manage decision criteria
- The economics of modularity rely on reuse to realize any benefits, include this facet as part of module decision-making



Module Design Reuse

Procurement and Contract Standards for Reuse

- Current projects working to develop module reuse standards include:
 - **Provider Screening Module (PSM)** - a crowd-sourced Application Development Challenge that continues today in an open-source repository and a model for procuring, developing, and maintaining shared modules
 - **ValuePoint Cooperative Purchasing** - The State of Montana, in cooperation with the National Association of State Purchasing Officials (NASPO) purchasing organization and various other states launched an MMIS-Provider Services module.
- Recommended Actions
 - Access CMSzONE to review and leverage existing planning and procurement documents
 - Review current guidance and opportunities provided by NASPO <https://www.naspo.org/>
 - States and vendors continue to engage on RFI, vendor demonstrations, and RFP review prior to procurements

Technology Reuse

Technology Initiatives for Reuse

- Service Oriented Architecture (SOA) – The MITA Technical Architecture asserts that the reuse of services is necessary to achieve the SOA Value Proposition
- Several current initiatives are underway to develop technology reuse standards being managed through groups such as:
 - Medicaid Innovation & Acceleration Stakeholders (MIAS)
 - Private Sector Technology Group (PSTG)
 - National Medicaid Enterprise Hub (NMEH)
 - MITA Governance Board
- **Recommended Actions**
 - API development must include the process and product for states to follow
 - As APIs are developed, multiple states and vendors must expand to multiple states to apply, adapt, and document to ensure reuse achieved beyond the initial project
 - Opportunity exists to define the data and messaging requirements within APIs; this is an opportunity for states and the industry to collaborate to develop reuse



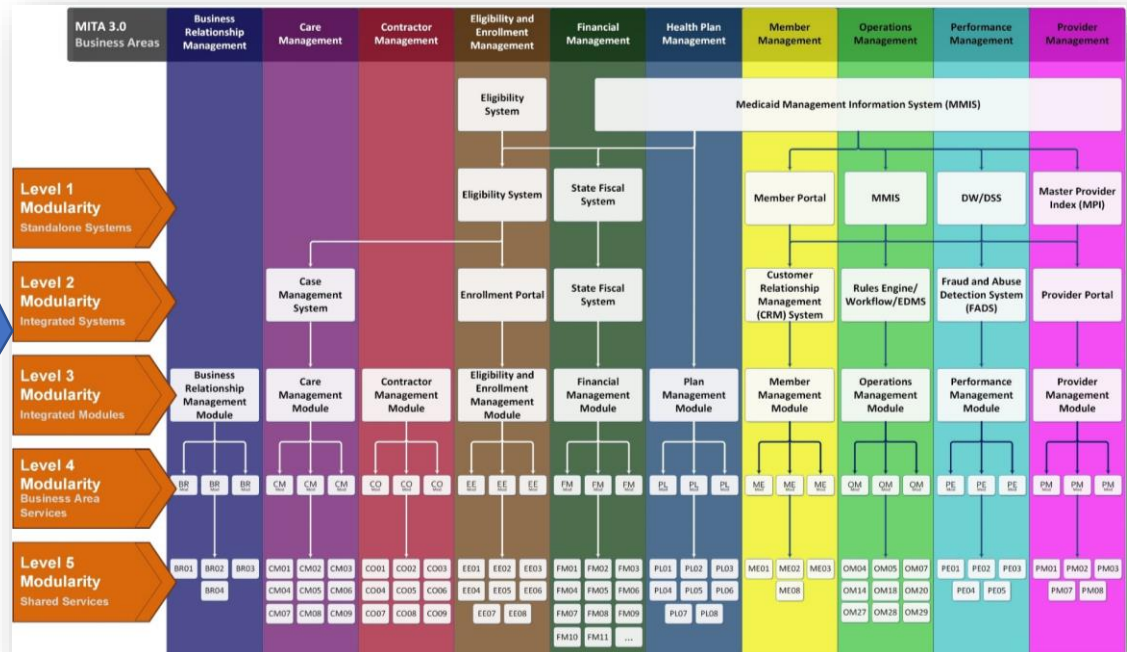
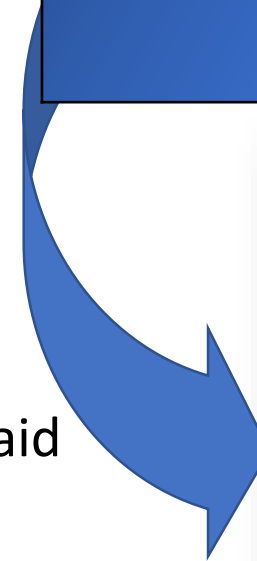
Industry Role in Reuse

- Reuse requires a national standard for both module definitions and module structure to be adopted across the industry
- State specific modules that cannot be shared across states challenges key MITA concepts
- Participate with projects such as Poplin to publish APIs and message sharing to allow full development support across vendors
- Support open source publishing of standard processes, APIs, and architecture funded through projects such as Poplin

CMS Role in Reuse

- Reuse would benefit from redefined standards for modules
- Consider revisions to the **Module Condition**
- Example:
 - **Level 1:** Standalone Systems
 - **Level 2:** Integrated Systems
 - **Level 3:** Integrated Modules
 - **Level 4:** Business Area Services
 - **Level 5:** Shared Services
- Provide guidance in the State Medicaid Manual
- Update Section 11310 to align to this guidance

Level 1	Level 2	Level 3	Level 4	Level 5
The SMA embeds standardized business rule definitions into core code, and has multiple interfaces using a variety of transmission modes. The SMA does not use a SDLC reusable messages or system architecture.	The SMA converts some interfaces to open interfaces and documents and inventories them. The SMA defines agency standardized business rules definitions, but has no business rules engine.	The SMA uses open interfaces and has them documented and inventoried within the intrastate agencies. The SMA develops extremely complex systems as part of a SOA with modularity methodology. The SMA uses intrastate standardized business rules definitions via business rules engine.	The SMA develops and maintains an exposed API to any regional data services hub available. The SMA develops Cloud Computing functions. The SMA uses interstate standardized business rules definitions via business rules engine.	The SMA interfaces with other federal or interstate state agencies' cloud services and repositories. The SMA uses national standardized business rules definitions via business rules engine.





States Role in Reuse

- Start early in the lifecycle process to allow adequate time to plan
- Develop an enterprise technology blueprint that defines the planned reusable modules
- Leverage functionality and documentation across programs and from other states
- When planning for the next module, leverage CMSzONE
- Publish all module and process documentation as new modules and services are being developed
- When procuring modules or shared services, assume a module is complete when it is functional and has all implementation guidance, planning, and testing scenarios, and training materials complete

Reuse Committee Members

Chair:

Randy Browning, Vice President

Cognosante

randy.browning@cognosante.com

Committee Members:

- Cindy Audet, Senior Manager of Business Operations, DXC – cindy.audet@dxc.com
- Nancy Bass, North Highland – nancy.bass@northhighland.com
- Gwen Blank, Vice President Client Partnerships, PCG – gblank@pcgus.com
- Loyd Kintz, Senior Business Analyst, Loyd Kintz Consulting – loydkintz@gmail.com
- Dana Long, IT Senior Specialist, PCG – dlong@pcgus.com
- Jeff Leintz, Client Executive, CSG - jleintz@csgdelivers.com
- Andrew Saxe, Account General Manager, DXC – andrew.f.saxe@dxc.com
- David Willard, Enterprise Architect, Molina Healthcare – david.willard@dxc.com